



**SUNTECH ENERGY LIMITED**

360°LED Lighting & Solar Power Solution Provider



***Innovative Green Products***

## About Us



### SIM GROUP

**SIM GROUP**, a large contributor in manufacturing and economic development of Bangladesh, displays admirable performance in the field of spinning and textile industry.

We entered into business arena as a manufacturer and exporter in the year 2000. Since then we have never looked back. By dint of our hard work and sincerity we have been capable to expand the confidence of highly dignified buyers of United Kingdom, USA and other members of European Union. Now we have a number of factories having 3500 workers and employees, working in an excellent atmosphere.

SIM GROUP has grown from starting fabric manufacturer to an exporter of entire range of fashion. By handling a large number of highly reputed clients and solving their complicated problems to their utmost satisfaction is an ample proof that we are in the right track. All employees in SIM GROUP are facing new challenges daily and facing them boldly. We will be happy to help you find a solution for your textile requirements.

We are producing 100% cotton and blended fabrics of different types to meet the requirements of overseas buyers.

### Suntech Energy Limited

**Suntech Energy Limited**, a concern of SIM Group established in 2012 is a new generation company. It is dedicated to make the latest concepts, technologies, products, services and solutions available in Bangladesh for the greater benefit of using those to the fullest. Suntech Energy represents global names and brands in renewable energy and power conservation with the workforce that possess relevant expertise combined with the logistics. Above all the commitment is to make a difference in this highly potential business sector.

#### Our Vision

We, at **Suntech Energy Limited** is striving to make Bangladesh more sustainable through innovation. We aim to achieve this by providing customers with quality products, added value and cost reduction. We are committed to be a socially and environmentally responsible organization.

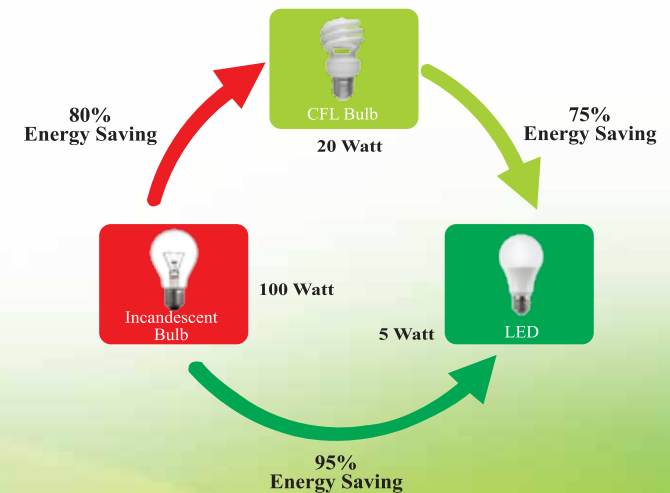
#### Our Mission

Our mission is to be the leading provider of innovative, environmental-friendly, high quality fixtures and related products to the Bangladeshi commercial, institutional and utility markets. As a recognized Leader in the lighting industry it is our responsibility to deliver superior value to our customers and their clients on a consistent basis. This commitment permeates everything we do, driving us to continuously develop and improve our products and the processes necessary to fulfill today's needs for quality, energy-efficient, eco-friendly lighting solutions.



## Comparison Chart

INCANDESCENT vs CFL vs LED Effectiveness Cost			
Description	Incandescent	CFL	LED
Light Quantity	1 PCS	1 PCS	1 PCS
Life span of each bulb	1,200 hours	6,000 hours	56,000 hours
Watts per bulb	100 Watt	20 Watt	5 Watt
Cost per bulb	50.00 TK	250.00 TK	350.00 TK
KWH of electricity used over 56,000 hours	5,600 Unit	1120 Unit	280 Unit
Cost of electricity (@13 per KWH)	72,800.00 TK	14,560.00 TK	3,640.00 TK
Bulbs required for 56,000 hours of use	46 PCS	9 PCS	1 PCS
Bulbs Expense	2,300.00 TK	2,250.00 TK	350.00 TK
Total Cost for 56,000 hours	75,100.00 TK	16,810.00 TK	3,990.00 TK



# LED Tube Light



## Description

Brand	: SUNTECH
Available wattages	: 18w, 20w, 22w, 24w, 26w, 28w
Input Voltage	: 95-265V AC
LED Light Source	: SMD 2835, 3014
Rated Life	: 56,000 hours
Luminous Flux	: 100+ lm per watt
Power Factor	: 0.95
Color Temperature	: 2700 – 6500k
Efficacy	: 105
CRI	: >80
Lumen Maintenance	: 98% upto 10,000 hours
Lamp Body Material	: Frosted fiber and pure aluminium
Cover	: Milk White
LED Chips	: Epistar (Taiwan)
Available Sizes	T8 : 2 ft and 4 ft. (Wall Mounted & T8 RT) T5 : 1ft, 2ft, 3ft and 4ft. T5~T8 : 4ft.

## Features

- Best for **industrial** and **indoor** use
- High Power efficiency > 88% (typical)
- High Luminous efficacy LEDs
- No mercury, no UV and no IR light radiation
- High Heat conducting efficiency, low lumens depreciation, high light purity
- Wide working voltage range, constant flow and pressure



■ SEL/LTL/RT-101



■ SEL/LTL/T5-102



■ SEL/LTL/WM-103



■ SEL/LTL/T5~T8-104



## LED Bulb

### Description

Brand	: SUNTECH
Available wattages	: 3w, 5w, 7w, 9w, 12w, 15w, 20w
Working Voltage	: 95-265V AC
LED Light Source	: SMD 2835
Rated Life	: 30,000 hours
Luminous Flux	: 100+ lm per watt
Power Factor	: 0.95
Color Temperature	: 2700 – 6500k
Efficacy	: 105
CRI	: >80
Lumen Maintenance	: 98% upto 10,000 hours
Lamp Body Material	: Frosted Fiber and Plastic
Cover	: Milk White
LED Chips	: Epistar (Taiwan)
Base type	: B22, E27
Bulb type	: Masroom & Pillar Bulb

### Features

- Appropriate for **indoor** usage
- High Lumen Efficient LEDs
- Energy saving and environment friendly
- No mercury, no UV and no IR light radiation
- No pollution of lead and Hg



■ SEL/LB-201



■ SEL/LB-202



■ SEL/PLB-203



■ SEL/MLB-204

# LED Panel Light



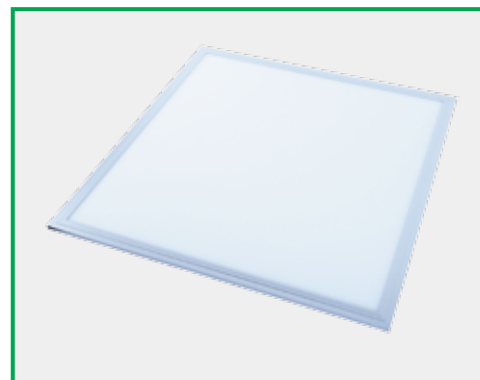
## Description

Brand	: SUNTECH
Available wattages	: 24w, 36w, 40w, 48w, 56w
Working Voltage	: 170 – 240V AC, 50/60 Hz
Rated Life	: 30,000 Hrs
Luminous Flux	: 100+ lm per watt
Power Factor	: 0.98%
Color Temperature	: 2700 – 6500k
Efficacy	: > 105
CRI (Minimum)	: >80
Lumen Maintenance	: 98% up to 10,000 hours
Lamp Body Material	: Aluminium Cast, Frosted Fiber, PC diffuser
LED Chips	: SMD, Epistar 2835 (Taiwan)
Beam angle	: 120°
Available versions	: Conceal and Surface

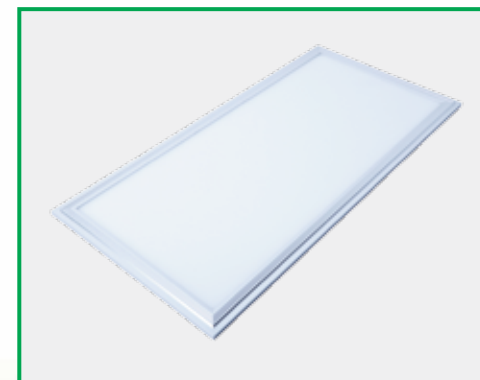
## Features

- Appropriate for **indoor** usage
- Cool light can reduce the rise of the ambient temperature
- Energy saving and environment friendly
- Professional appearance with elegant and slim structure
- No mercury, UV and IR light radiation, No heavy metal pollution
- Wide voltage, constant current stable performance

High Heat conducting efficiency, low lumens depreciation, high light



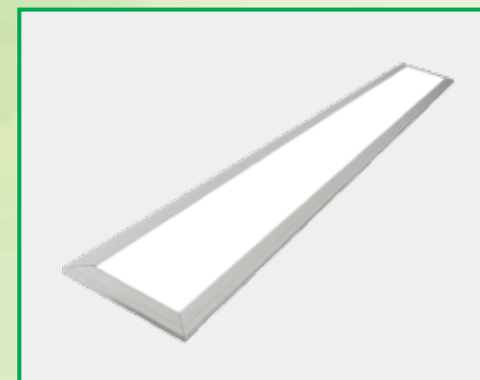
■ SEL/PL-301  
Dimension: 600mm x 600mm



■ SEL/PL-302  
Dimension: 300mm x 1200mm



■ SEL/PL-303  
Dimension: 300mm x 300mm



■ SEL/PL-304  
Dimension: 150mm x 1200mm

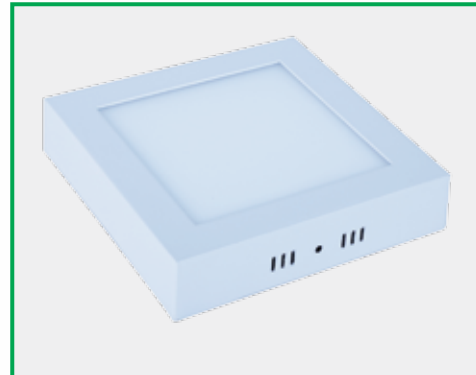
## LED Panel Light Surface & Conceal

### Description

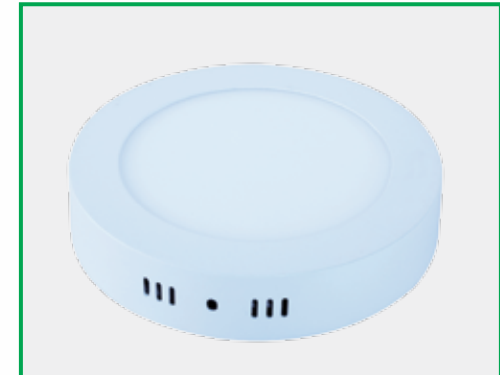
Brand	: SUNTECH
Available wattages	: 3w, 6w, 7w, 9w, 12w, 15w, 18w, 24w,
Working Voltage	: 85-265V AC, 50/60 Hz, AC: 0.65A
LED Light Source	: SMD
Shapes available	: Round, rectangular
Rated Life	: 30,000 Hrs
Luminous Flux	: 100+ lm per watt
Power Factor	: >.65A
Color Temperature	: 2700 – 6500k
Efficacy	: > 105
CRI (Minimum)	: >80
Lumen Maintenance	: 98% up to 10,000 hours
Lamp Body Material	: Aluminium cast, Frosted Fiber
LED Chips	: Epistar (Taiwan)
Beam angle	: 120°

### Features

- High Power efficiency > 88% (typical)
- Easy installation, no maintenance needed
- 85% Energy-saving and environment-friendly
- No mercury, no UV and no IR light radiation
- High Heat conducting efficiency, low lumens depreciation, high light purity



■ SEL/PL/SURF-401



■ SEL/PL/SURF-402



■ SEL/PL/CON-403



■ SEL/PL/CON-404



## LED High Bay Light

### Description

Brand	: SUNTECH
Available wattages	: 50w, 100w, 150w, 200w, 300w, 400w
Input Voltage	: 85~265V AC
LED Light Source	: COB/SMD
Rated Life	: 50000 Hrs
Luminous Flux	: 110±5 / W
Power Factor	: 0.95
Color Temperature	: 6500K
CRI	: >80
Lumen Maintenance	: 98% up to 10000 Hrs.
Lamp Body Material	: Aluminium
LED Chips	: Epistar (Taiwan)
Power Supply	: Mean Well/China
Beam angle	: 120°
Operation Temperature	: -40~500C
IP Grade	: IP 54

### Description

Brand	: SUNTECH
Available wattages	: 250w, 400w
Working Voltage	: 220 – 240 V/50 Hz
Ballast type	: Magnetic
Replacement Lamp	: 250w/400w MH Lamp (E40)
Length (inch)	: 22.3
Width (inch)	: 22.3
Height (inch)	: 23.65
Body	: White die cast aluminium
Warranty	: 1 year (Ballast, Capacitor, Igniter)



■ SEL/LHBL-501



■ SEL/LHBL-502



■ SEL/LHBL-503



■ SEL/LHBL-504



## LED Flood Light

### Description

Brand	: SUNTECH
Available wattages	: 10w, 20w, 30w, 50w, 100w, 150w, 200w, 300w, 400w
Working Voltage	: 85-265V AC
LED Light Source	: COB (Epistar)/SMD
Rated Life	: 50,000 hrs
Luminous Flux	: 100+ lm/w
Power Factor	: $\geq 0.95$
Color Temperature	: 3000-6500k
CRI	: $>80$
Lumen Maintenance	: 100% upto 10,000 hrs
Lamp Body Material	: Pure aluminium, Tempered glass
Beam angle	: 120°
IP Grade	: IP 65/66/68

### Description

Brand	: SUNTECH
Available wattages	: 50w, 80w, 100w, 200w, 300w
Working Voltage	: 85-265V AC 50/60 Hz
LED Light Source	: COB (Epistar)/SMD
Rated Life	: 50,000 hrs
Luminous Flux	: 100+ lm/w
Power Factor	: $>0.97$
Color Temperature	: 3000-6500k
CRI	: $>80$
Lumen Maintenance	: 100% upto 10,000 hrs
Lamp Body Material	: Pure aluminium, Tempered glass
Beam angle	: 60°
IP Grade	: IP 65/66
Specialty	: High concentrated reflection plate



■ SEL/FL-601



■ SEL/FL-602

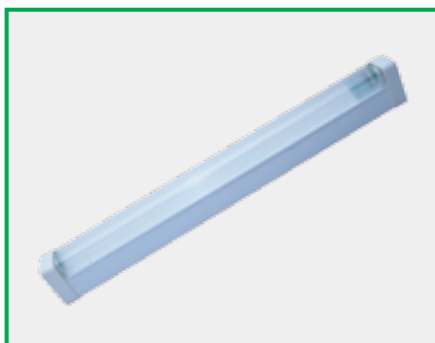


■ SEL/FL-603



■ SEL/FL-604

## LED Fixture



■ SEL/LED/FIX-701



■ SEL/LED/FIX-702



■ SEL/LED/FIX-703



■ SEL/LED/FIX-704



■ SEL/LED/FIX-705



■ SEL/LED/FIX-706



■ SEL/LED/FIX-707



■ SEL/LED/FIX-708



## LED Street Light

### Description

Brand	: SUNTECH
Available wattages	: 50w, 80w, 100w, 150w, 200w
Input Voltage	: AC 85V-265V, 50-60 Hz
LED type	: COB LED Light Source/SMD
Life span	: 50,000 hours
Luminous Flux	: 100+/w
Power Factor	: 0.95
Color Temperature	: 2800-7500k
Power Efficiency	: 85%
CRI	: >80
Lumen Maintenance	: 100% up to 10,000 hrs
Lamp Body Material	: Tempered glass, pure aluminium
Beam angle	: 130°
IP Grade	: IP65-IP67

### Features

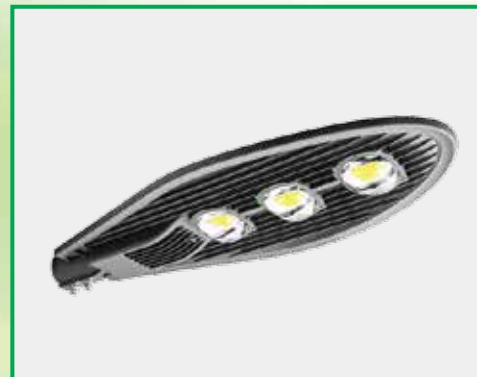
- High Heat conducting efficiency, low lumens depreciation, high light purity
- IP 65-IP67 standard, free from water, dust and corrosion
- Wide working voltage range, constant flow and pressure
- Environmental protection, no pollution of lead and Hg
- The decorative effect is wonderful, the surface adopted special process
- Shock and vibration proof



■ SEL/LED/SRT-801



■ SEL/LED/SRT-802

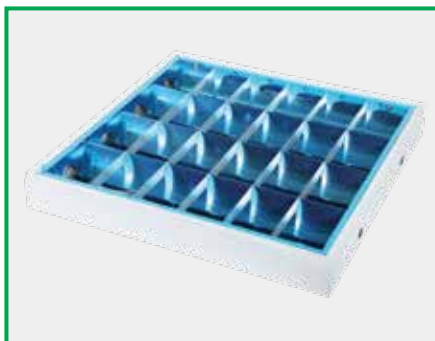


■ SEL/LED/SRT-803



■ SEL/LED/SRT-804

## LED Louver Shade



■ SEL/LED/LOVRS-901



■ SEL/LED/LOVRS-902



■ SEL/LED/LOVRS-903



■ SEL/LED/LOVRS-904



■ SEL/LED/LOVRS-905



■ SEL/LED/LOVRS-906



■ SEL/LED/LOVRS-907



■ SEL/LED/LOVRS-908

## LED Conceal Down Light



■ SEL/LED/CON/DL-1001



■ SEL/LED/CON/DL-1002



■ SEL/LED/CON/DL-1003



■ SEL/LED/CON/DL-1004



■ SEL/LED/CON/DL-1005



■ SEL/LED/CON/DL-1006

## LED Surface Down Light



■ SEL/LED/SURF/DL-2001



■ SEL/LED/SURF/DL-2002



■ SEL/LED/SURF/DL-2003



■ SEL/LED/SURF/DL-2004



■ SEL/LED/SURF/DL-2005



■ SEL/LED/SURF/DL-2006



## LED Conceal Spot Light



■ SEL/LED/CON/SPT-3001



■ SEL/LED/CON/SPT-3002



■ SEL/LED/CON/SPT-3003



■ SEL/LED/CON/SPT-3004



■ SEL/LED/CON/SPT-3005



■ SEL/LED/CON/SPT-3006



■ SEL/LED/CON/SPT-3007



■ SEL/LED/CON/SPT-3008



## LED Conceal Spot Light



■ SEL/LED/CON/SPT-3009



■ SEL/LED/CON/SPT-3010



■ SEL/LED/CON/SPT-3011



■ SEL/LED/CON/SPT-3012



■ SEL/LED/CON/SPT-3013



■ SEL/LED/CON/SPT-3014



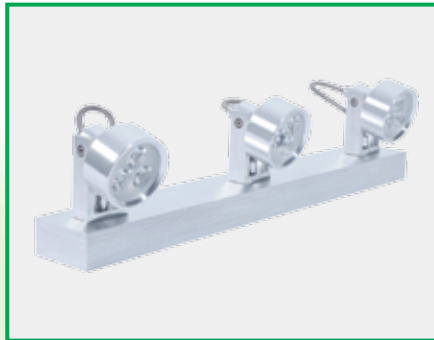
■ SEL/LED/CON/SPT-3015



■ SEL/LED/CON/SPT-3016



## LED Wall Mounted Spot Light



■ SEL/LED/WM/SPT-4001



■ SEL/LED/WM/SPT-4002



■ SEL/LED/WM/SPT-4003



■ SEL/LED/WM/SPT-4004



■ SEL/LED/WM/SPT-4005



■ SEL/LED/WM/SPT-4006



■ SEL/LED/WM/SPT-4007



■ SEL/LED/WM/SPT-4008

## LED Foot Light



■ SEL/LED/FOOT-5001



■ SEL/LED/FOOT-5002



■ SEL/LED/FOOT-5003



■ SEL/LED/FOOT-5004



■ SEL/LED/FOOT-5005



■ SEL/LED/FOOT-5006



■ SEL/LED/FOOT-5007



■ SEL/LED/FOOT-5008

# SOLAR UNIT

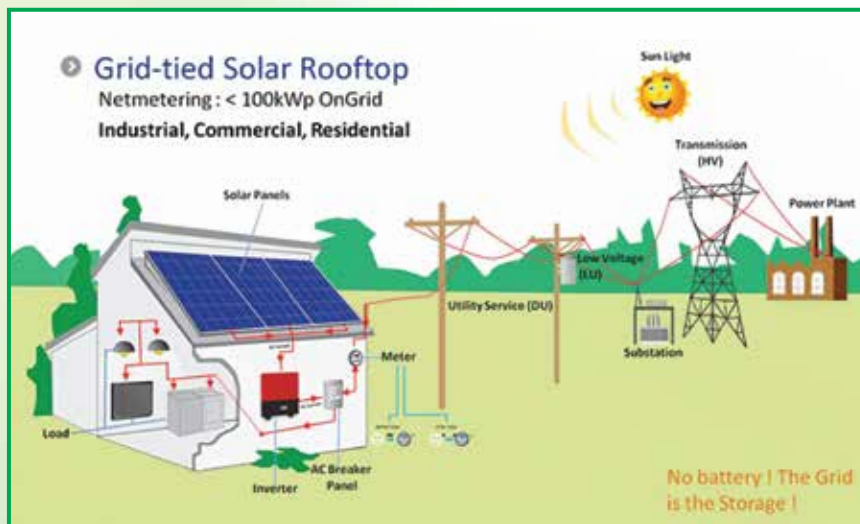
## Grid Tie Roof top Solar Power System:



- A grid tie inverter is a special type of inverter that converts direct current electricity into alternating current electricity and feeds it directly into the existing electrical grid.
- The technical name for a grid tie inverter is "Grid-interactive inverter": That may also be called Synchronous inverter. Grid-inverter typically cannot be used in standalone application where utility power is not available.
- According to this system customers can sell power directly to the grid connection and that may help the government.

### Advantages:

- The advantage of GTI's is that they are scalable, if you add more solar panels to your home you can simply add and additional GTI in parallel with your existing one to scale up your power handling capability.
- GTI is less expensive than a comparable system that uses a battery bank for electricity storage. Battery storage systems are expensive and also needs to be replaced at least once during the lifetime of a typical solar power system. By using a GTI, you are able to reduce your overall cost of solar energy.
- As there is no battery bank for grid tie inverter, Grid tie solar system will be most cost effective compare to all other solar system. PRDF has the capability to supply and install Solar Grid-tie System up to Megawatt Level.



## Solar System for new electric connection

### Solar System for new electric connection (any capacity):

A photovoltaic (PV) Cell is made of thin layers of Silicon based photo sensitive Semi-conductive materials.

Electrical charge (DC) is produced when sunlight is exposed on it. PRDF supplies and installs off Grid and on Grid these two types of solarelectric system .

### Solar Hybrid/ Off Grid System:

A hybrid renewable energy system utilizes two or more production method, usually a renewable source (solar, wind etc.) and grid or generator. In hybrid system the renewable source, usually Solar energy is assigned as a primary and priority source of power generation and Grid or generator as a secondary source or less priority source when solar power is not available. On day time the solar panels keep charging directly the battery and does not require grid power. But, when the batteries get fully charged then PV module automatically switches into float position. So there is a possibility of wastage of generation from module.



## SOLAR STAND ALONE



■ SEL/SOLAR/STAND/ALN-101



■ SEL/SOLAR/STAND/ALN-102



## Solar Panel

10Wp to 320Wp  
(Polycrystalline and Monocrystalline)



■ SEL/SOLAR/P

## On grid Inverter and Off grid Inverter



■ SEL/GI/101



■ SEL/GI/102



■ SEL/GI/103

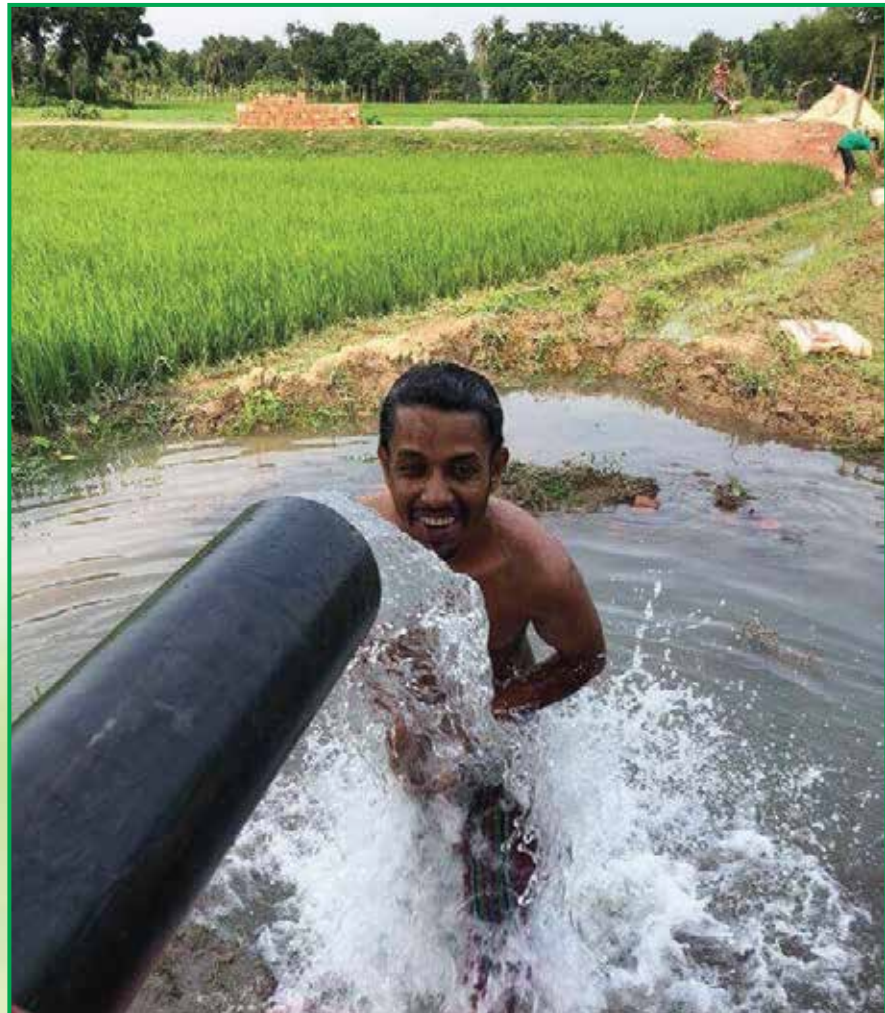


■ SEL/GI/104

## Solar : Irrigation Plant



Innovative Green Products

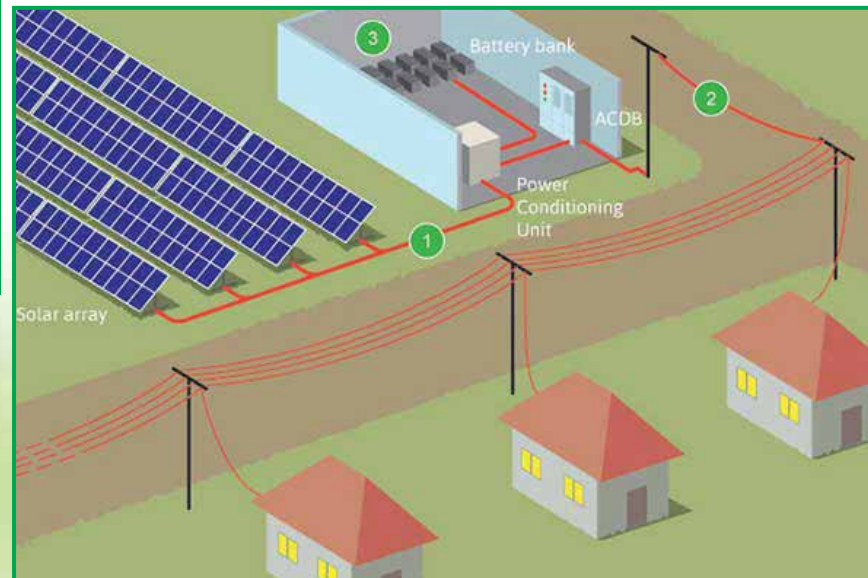






Innovative Green Products

## Solar: Mini-Grid





## SUNTECH ENERGY LIMITED

*A Concern of* **SIM GROUP**

Corporate Office: House-315, Road-04, DOHS, Baridhara, Dhaka-1206

Tel: +88 02 8415961-3, Fax: +88 02 8415964, Mobile: 01711107384

Email: [info-suntech@simgroup-bd.com](mailto:info-suntech@simgroup-bd.com), Web: [www.simgroup-bd.com/suntech](http://www.simgroup-bd.com/suntech)

Industry: Thakurbari Teac, Masumabad, Bhulta, Rupgonj, Narayangonj

**Hotline: +8801708483442, +8801708483445, +8801708483444**